



Shin-ya NISHIMURA, Dr. Eng.

Professor, Vice President

Program: Environmental Science and Technology

Area: Architecture

Undergraduate: Dept. of Architecture

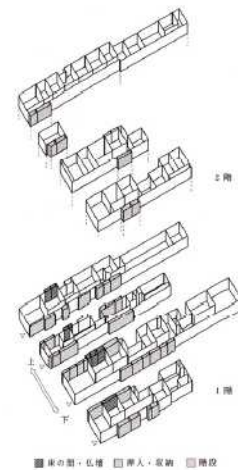
<http://www.eng.niigata-u.ac.jp/~nishimura/>

Professional Expertise

Architectural designs for school and town landscape by collaboration with inhabitants are major activities in Nishimura laboratory. The professional expertise encompasses the design method and architectural programming for housing and school architectures.

Research Fields of Interest

- The research for sustainable space syntax of the traditional housing and villages in north China, Korea, south France. The houses with the traditional space system like “Machiya in Japan”, “Kan in north China”, and “Dips in south France” are focused in this study.
- The research for the characteristic interpenetration of students’ behavior mode in elementary and middle schools. The students make up their own spaces in the schools with their marked mode of behaviors. And they are connected with the students’ groups and open spaces in schools.
- Collaborative design and construction with inhabitants for sustainable town planning and landscape architecture. The wooden arcades are designed on the collaboration with the inhabitants and students of Niigata university.
- Architectural designs for kinder garden, elementary school, middle school, high school and university. Design and programming for the schools are the main filed of nishimura laboratory.
- Architectural design for pocket parks. Every year small park is designed and constructed by replanting the trees from the hillside to the pocket park in the center of Sanjo City. Nishimura laboratory have developed the international research projects and collaborate with CNRS France, Valencia University Spain, Tsinghua University, Dalian Institute of Technology and Harbin Institute of Technology China. Also Nishimura studio has carried out a lot of designs for the schools and town landscape. Dr. Shin-ya Nishimura has created the practical program for designing and building a wooden arcade and small park each year by collaborating on a designing and building process with local inhabitants in Japan.



Seiroh Middle School



Memorial building for Faculty of Niigata University



Design and Construction for wooden arcade



Design of Pocket Park in Sanjo City

Education

2001-2002: Visiting Research Fellow, CNRS Centre National de la Recherche Scientifique, FRANCE

1988: Doctoral engineering degree, Tokyo University, Japan

1980: Master engineering degree, Graduated School, Tokyo University, Japan

1978: Bachelor engineering degree, Graduated from Department of architecture, Tokyo University, Japan

Professional Societies and Activities

1. Member of the Architectural Institute of Japan (AIJ)
2. Member of the Men - Environment Research Association (MERA)
3. Member of the American Society for Engineering Education (ASEE)
4. Member of the Comparative and International Education Society (CIES)

Awards

1. The Sustainable Local Town Planning Prize 2011
2. The Urban Landscape Design Prize 2011
3. The educational Prize by the architectural institution of Japan 2010
4. The architectural design prize by the Architects Office Institute of Japan 2008
5. The First prize of town Landscape 2008 by the Ministry of Land, Infrastructure and Transport Government of Japan
6. The 2004 admired model of continuing education and town planning by the Ministry of Education, Culture, Sports, Science and Technology of Japan
7. The Administration Prize 2002 by the Ministry of Public Management, Home Affairs, Posts and Telecommunications of Japan

Major Publications

Books and Papers

- [1] Nishimura, S. *Advances in People, Environment Studies* vol.1, Environment, Health, and Sustainable Development, HOGREFE / IAPS, ISBN 978-0-88937-374-7, April 2010
- [2] Nishimura, S., & Takahashi, T., *Environment & design Tokyo* :Asakura. ISBN 978-254-26853-9, February 2008
- [3] Nishimura, S., & Sengoku, M., *Design for engineering and Innovation*, Tokyo: Maruzen. ISBN 978-4-621-07817-4, January 2007
- [4] Nishimura, S., & Iwasa, A., *A designing and building educational program in collaboration among students inhabitants and local professionals*, In 10th WCCE, May 2006

Design Activities

1. 2010 Building for University-Industry Cooperation of Niigata University
2. 2009 Ayumi Kinder Garden of Niigata University
3. 2008 Schematic design for Hokuetsu High School in Niigata City
4. 2007 Memorial Building for Faculty of Engineering of Niigata University
5. 2004 Renovation of Educational Center for Faculty of Engineering of Niigata University
6. 2002 Entrance Renovation for Faculty Niigata University
7. 2001 Seiroh Middle school in Seiroh City
8. 2001 Schematic design for Kanazawa Municipal Technical High School in Kanazawa
9. 1999 Friend Park of Kashiwazaki Japan
10. 1998 Bus Stop of Kashiwazaki Honcho in Kashiwazaki City
11. 1997 Nigiwaino Michi Road of Kashiwazaki City
12. 1996 School for Disabled of Saga Prefecture